

Product Enhancements

June 2018

Platform Release 2018.3

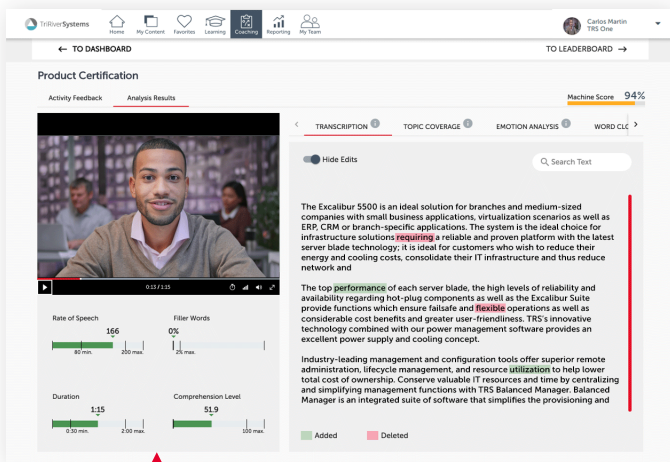
Here's a quick look at the latest features available this month for Brainshark customers!

COACHING

Machine Analysis

Brainshark's Machine Analysis engine elevates coaching and keeps reps on message with AI-powered scoring and feedback.

- **Scoring:** Auto-score video submissions to ensure sellers hit the right notes when delivering critical messages.
- **Insights:** Provide reps with an engaging practice tool to improve performance with analysis of emotions exhibited, topics covered and more.
- **Automation:** Streamline the coaching process and save time by quickly identifying areas that need improvement.



Automated Activity Analysis & Feedback

- Audio Transcript
- Speaking Rate
- Video Duration
- Topic Coverage
- Comprehension Level
- Filler Word Monitoring
- Emotion Analysis
- Personality Insights

COACHING (CONTINUED)

Record Coaching Video Without Flash

Coaching customers using IE 11/Windows 10 can now record in the coaching environment with no reliance on Flash.

- Brainshark plug-in required
- IE 11/Windows 10 required
- Available to customers on request

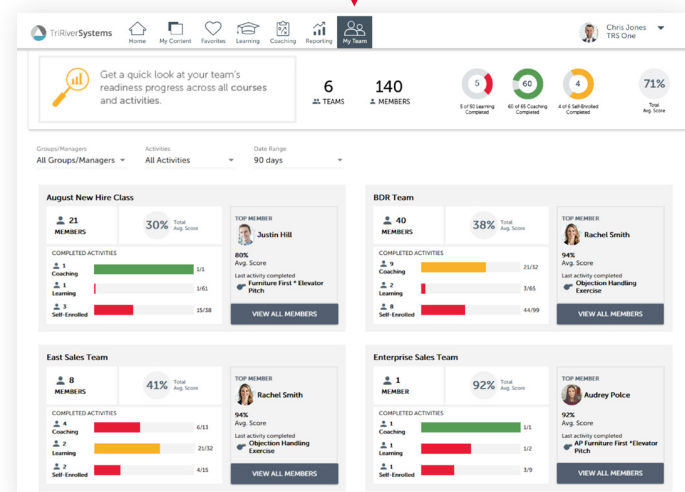
PLATFORM

Team Dashboards

Team dashboards track the readiness progress of your organization's learning, coaching, and self-enrolled activities – enabling managers to drill down into the details of their specific team.

- New 'My Team' tab on the navigation menu
- Individual progress cards for each team
- Completion statistics and average scores
- Top performers highlighted for each team
- 'View All Members' to access more details

New 'My Team' Tab

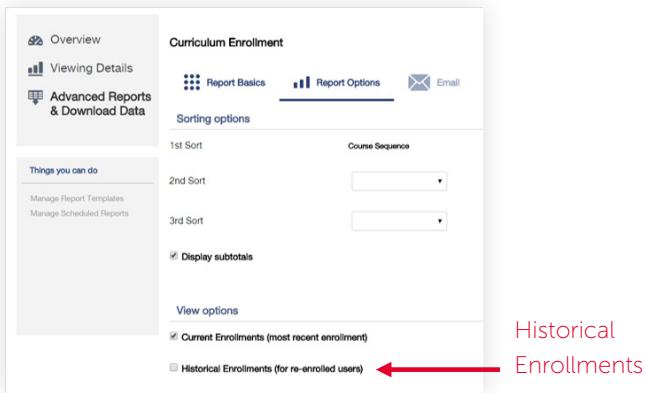


REPORTING

Curriculum Enrollment Report Update

The Curriculum Enrollment report has been updated to provide enrollment data for historical and current enrollments.

- Customers who use the re-enrollment feature to enroll students are now able to run this report to view both current and historical enrollment information.
- 'Current Enrollments' is selected by default. Select the 'Historical Enrollments' option to include historical enrollment data in the report



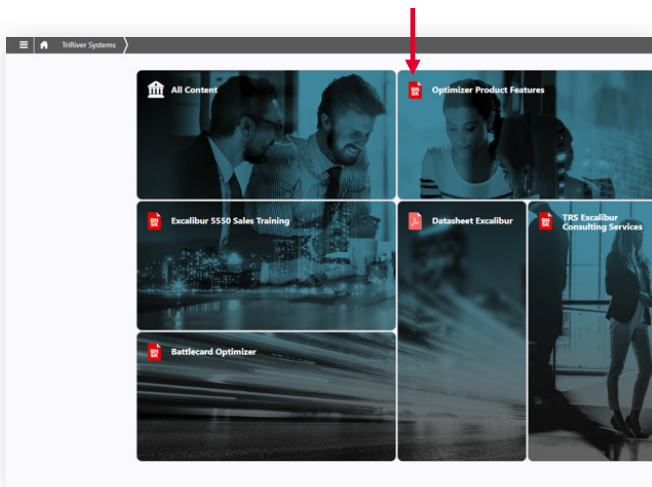
INTEGRATIONS

Brainshark Seismic Integration

The Brainshark and Seismic integration enables customers of both companies to access Brainshark content from their Seismic environment. This includes both formal and informal learning content.

- Users choose which content to sync: active content and active, open enrollment courses (not curriculums)

Brainshark content in Seismic is labeled with a Brainshark icon



CONTENT

General Updates

- **Flash Removal: Merge Presentation**
When using the Merge Content feature, authors can preview slide audio, even if Flash is disabled in their browser.
- **Flash Removal: Background Audio**
When adding a Background Audio track to a presentation, authors can preview Background Audio, even if Flash is disabled in their browser.
- **Generate Audio without Flash**
When generating audio automatically from Slide Notes, authors can listen to a voice sample, even if Flash is disabled in their browser.

MOBILE APP (VERSION 4.1.0)

Push Notifications

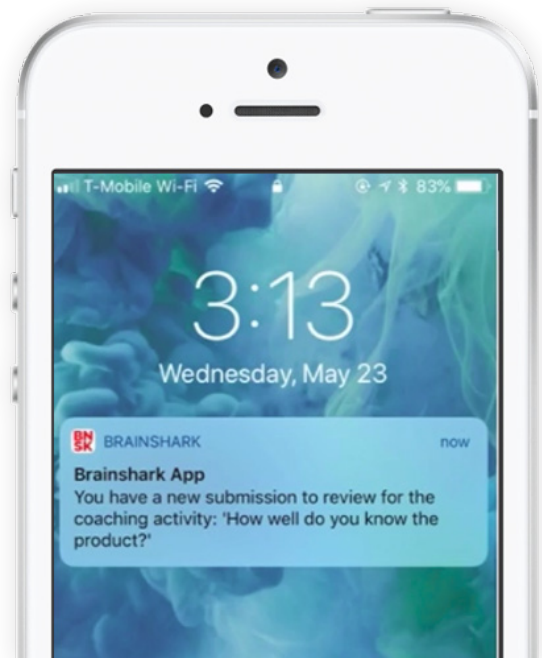
Users can now receive push notifications on their mobile device. These notify them of important updates in real-time and take them directly to the activity in the app.

Push Notifications for Learning

- When users are enrolled in a new course
- When users are enrolled in a new curriculum

Push Notifications for Coaching

- When users have been invited to take a new activity
- When their activity submission has been reviewed
- When reviewers have a new submission to review



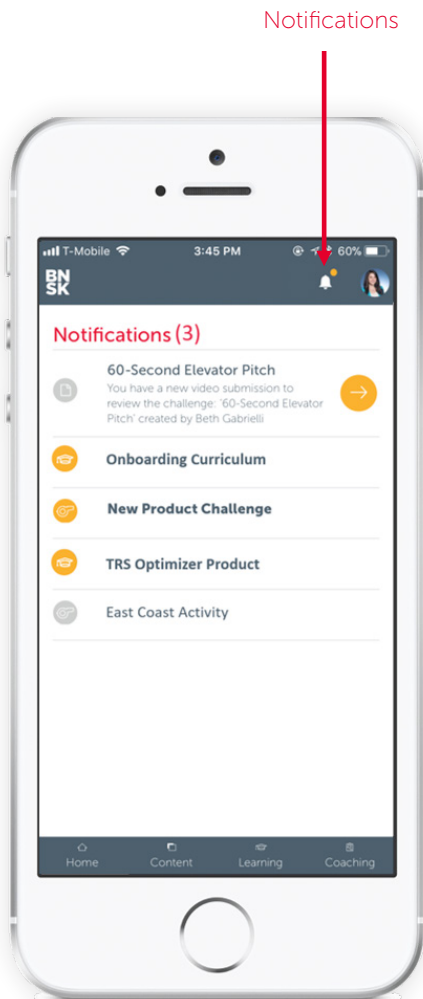
MOBILE APP (CONTINUED)

In-app Notifications

Users can now receive in-app notifications to notify them of important updates in real-time.

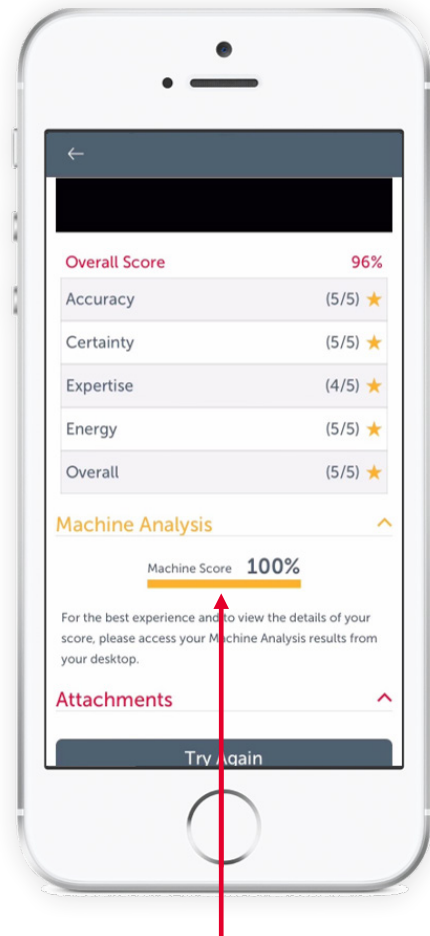
An orange indicator next to the new bell icon in the header informs users that they have new or unread notifications. Users can select this icon to access their notifications page.

- Opening a notification will mark it as read
- The arrow will bring users directly into the activity
- Users can delete notifications by swiping left



Machine Score Shown in Coaching

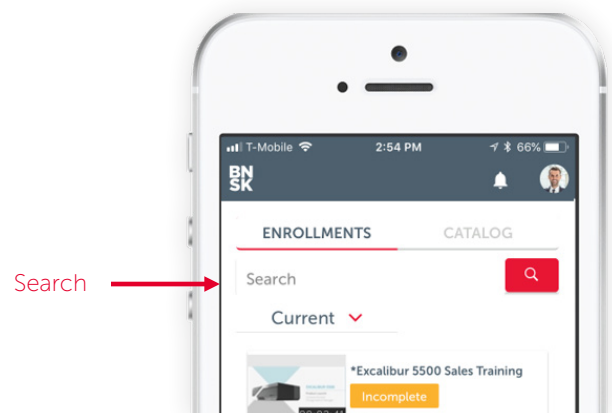
A user's Machine Score on a coaching activity is now visible on the Activity Details page from within the mobile app.



- Users can view their overall Machine Score on any activities that have Machine Analysis enabled
- For a more detailed view of Machine Analysis results, we recommend viewing Machine Analysis results from the desktop

Search in Learning

The mobile app now supports search within learning. Users can search for courses and curriculums within their enrollments and the course catalog directly from the app.



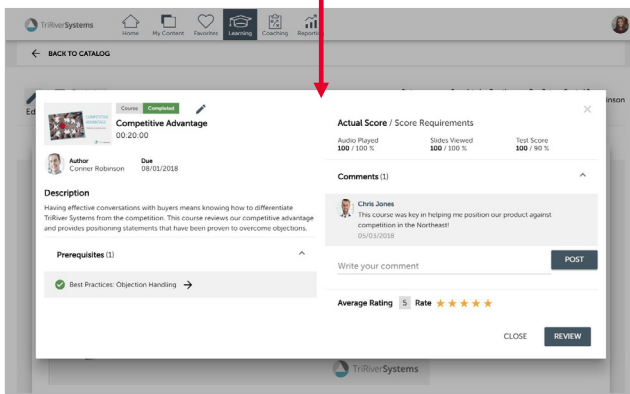
LEARNING

'Course Details' Page Enhancements

The Course Details page has been redesigned and converted to a modal to make it easier for learners to access details they need.

- Learners may now view course details in a modal, without leaving the initial page they're viewing (e.g. My Enrollments, Curriculum Details)
- The modal is responsive to browser resizing

Course Details Modal

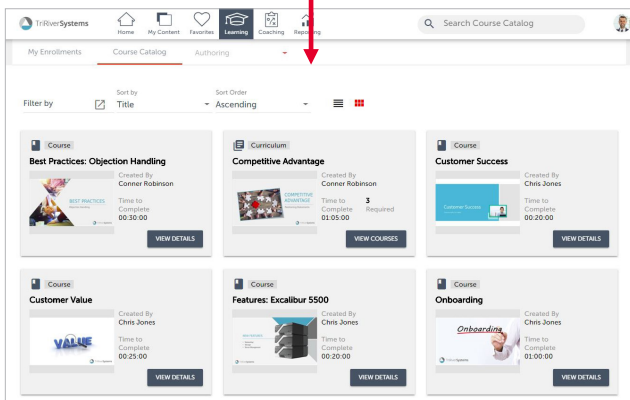


'Course Catalog' Page Enhancements

The Course Catalog page has been redesigned to provide a more modern look and feel that's consistent with the new UI throughout the site.

- The appearance matches other Learning pages
- The page is responsive to browser resizing
- Functionality is not changing

New Page Design



Learning Enhancements

Small enhancements have been made to improve the user experience of our new Learning pages:

- **Collapse/Expand Progress Tracker:** A user may now collapse the Progress Tracker on their My Enrollments page by hovering under 'My Enrollments'. When new learning items with a due date are assigned, an alert bell will activate to notify students to expand the Progress Tracker. The student's selection is remembered on their next visit.
- **Hover Text:** Hover text has been added for course titles on the Curriculum Details page to accommodate courses with long titles.
- **Sort by 'Recently Viewed':** Users can now sort enrollments by 'Recently Viewed' on the My Enrollments page. The sort option takes effect for items viewed after May 12th.
- **Curriculum Duration:** If the Estimated Duration field is not populated on a course, the Audio Duration will now be used to calculate Curriculum Duration.